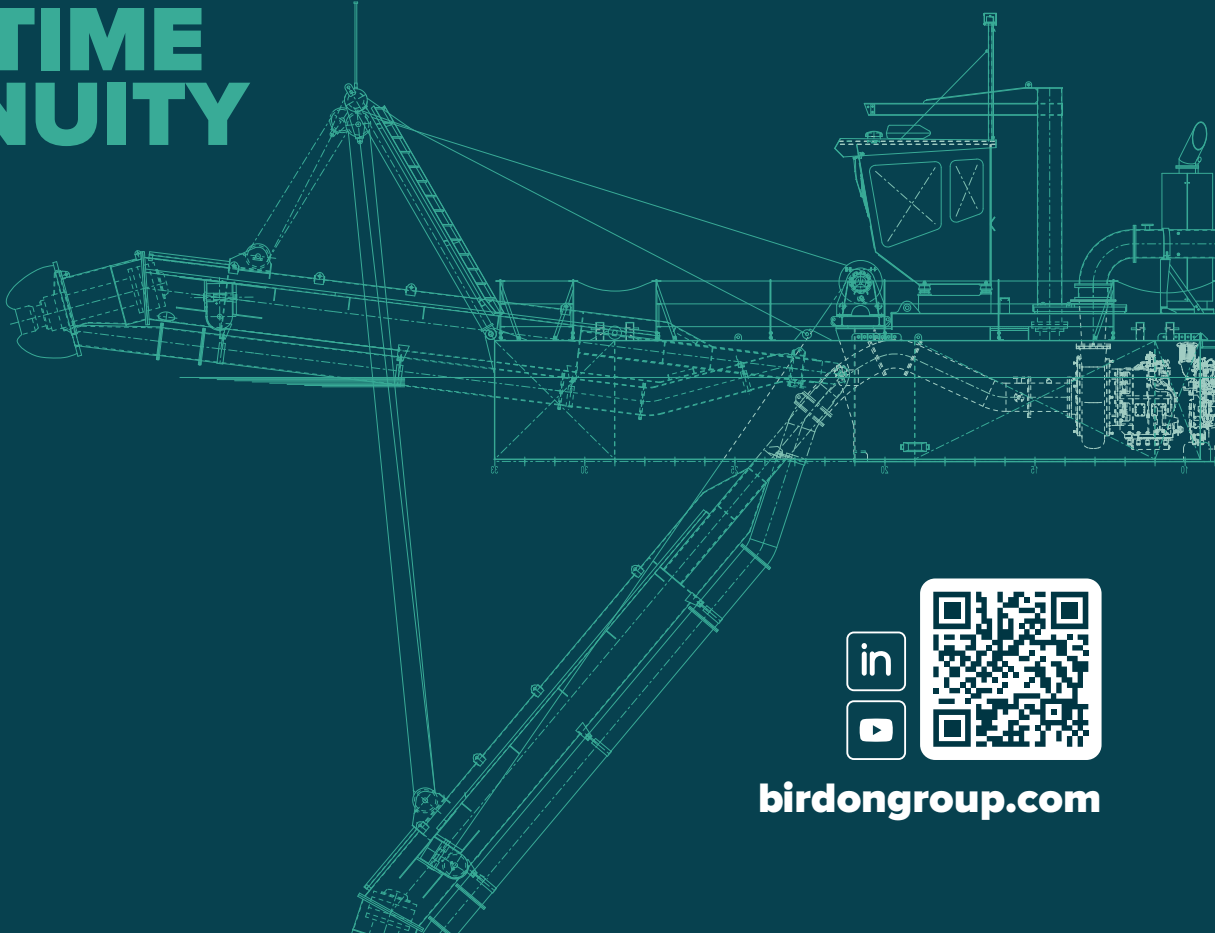




CAPABILITY STATEMENT

# DREDGING

**MARITIME  
INGENUITY**



# BIRDON

## DELIVERING CERTAINTY IN HIGH-STAKES ENVIRONMENTS

From mine tailings and pit remediation to coastal maintenance and channel deepening, Birdon delivers certainty in high-stakes dredging environments. Our clients across mining, government, and defence sectors rely on our engineered solutions, in-house capability, and unrelenting commitment to safety, performance, and compliance.

Whether enabling future extraction or sustaining critical marine access, Birdon is the trusted partner to deliver high-impact outcomes on time and under pressure.

We partner with mine operators, EPCMs, and environmental engineers navigating the pressure of regulatory scrutiny, ESG obligations, and mine lifecycle transitions.

Our role? To unlock the next phase; whether that's decades of continued extraction, safe and sustainable closure, or the restoration and ongoing use of vital waterways.



**750+**  
employees across  
16+ sites globally

**\$4B+**  
pipeline of  
active contracts

## A LEGACY BUILT TO LAST

From early-stage tailings relocation to long-term coastal maintenance programs, Birdon delivers engineered, performance-led dredging solutions.

Birdon was founded in 1977 as a dredging company in Port Macquarie, where we are still proudly headquartered today.

We remain a family-owned business with a global footprint, delivering whole-of-life maritime and engineering solutions across Australia, the United States, Europe, Asia, and the UK.

Our dredging roots run deep, and our work in the mining and resources sector builds on decades of operational knowledge, engineering innovation, and regional delivery.



# OUR VALUES



**CUSTOMER  
DRIVEN**



**MAKE IT  
HAPPEN**



**TRUST**



**FAMILY  
CULTURE**

# OUR VISION



**CREATING  
CERTAINTY**  
for our customers  
by engineering  
and delivering  
the right  
maritime  
solutions.



We operate across Australia from regional hubs like Mt Thorley, Queenscliff and Port Macquarie, with in-house engineering, a modern dredge fleet and a team that makes it happen.

Trusted by:

**GLENCORE**



# WHY BIRDON

Birdon combines the responsiveness of a regional dredging contractor with the discipline of a global maritime business. We offer full lifecycle support; engineering, mobilisation, compliance, delivery, underpinned by proven performance in mine, port, and defence environments.

Our clients trust us to solve the hardest dredging problems because that's where we deliver the most value.



**Tailored solutions**  
built around each  
site's needs



**Strategic**  
long-term relationships; including 25+  
years of trusted work with Parks Victoria



**Responsive**  
mobilisation from  
regional hubs



**Expertise**  
in optimising mining  
operations through safe,  
efficient tailings relocation



**In-house engineering**  
to match dredge capability  
to project complexity



**Scalable fleet**  
and agile delivery  
model



**Demonstrated ESG**  
safety and compliance  
track record



**24/7**  
operational  
execution

## PROJECT SNAPSHOT

# BULGA MINE, GLENCORE



At Glencore's Bulga Mine, we're delivering one of Australia's largest tailings relocations:



**Project Duration:**  
2021-2027



**Scope:**  
30 million  
m<sup>3</sup> of coal  
tailings  
relocated



**Operations:**  
Continuous  
24/7  
operations



**Outcome:**  
Unlocks over  
10 years of  
additional  
mine life

We operate in close alignment with mine planners and site managers, delivering safe and uninterrupted dredging that is critical to mine continuity.

# PROJECT SNAPSHOT

## PARKS VICTORIA



Birdon supports ongoing marine maintenance services across key Victorian assets. With a mobile, regionally deployed fleet, we handle:



**Silt and sediment removal**



**Navigational channel maintenance**



**Environmentally sensitive operations**



*“Birdon is our go-to source for dredging expertise. Highly recommended.”*

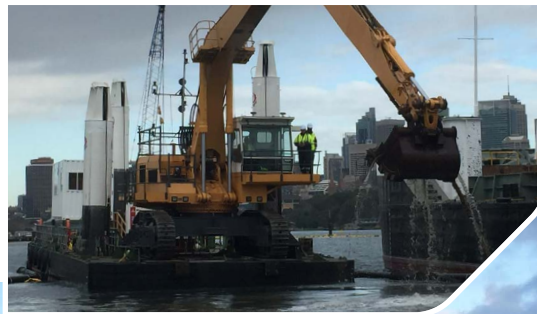
**- Simon Marangio,  
Port Services Officer,  
Parks Victoria.**



# PROJECT SNAPSHOT

## GARDEN ISLAND, SYDNEY HARBOUR

Birdon has now delivered three separate dredging contracts at the Royal Australian Navy's key base in Sydney Harbour. The most recent project involved maintenance dredging and the removal of contaminated material across five critical berths, continuing Birdon's trusted role in supporting naval infrastructure through tailored marine solutions.



### Project Duration:

September 2024 – January 2025



**Objective:** Restore five critical vessel berths to design depths



**Scope:** Removal of 3,200m<sup>3</sup> of sediment including restricted solid waste



**Method:** Birdon deployed the Backhoe Dredge "BHD Sydney" equipped with a 100 tonne Liebherr 984 excavator and the spud-mounted hopper barge "Pelican".



**Innovation:** Developed a proprietary polymer additive to solidify soft material, enabling safe trucking to licensed disposal facility.



**Environmental Classification:** Restricted Solid Waste (non-putrescible) with Special Waste (Asbestos) due to elevated levels of TBT and asbestos

# PROJECT SNAPSHOT

## LOY YANG MINE

Birdon completed dredging of 1,400,000m<sup>3</sup> of ash slurry over 11 months. The project included:



**Cutter suction dredge mobilisation**



**24/7 operations to meet fixed EPA trial deadlines**



**1 km of 350mm discharge pipeline**



*"Birdon were self-sufficient and worked through unique challenges professionally. They understood their role in the broader site operation and got the job done without disruption."*

**- Steven Cluning, Civil Superintendent, AGL Loy Yang Mine**



# PROJECT SERVICES

**Birdon delivers comprehensive support across the lifecycle of mining and marine sectors. Our services include:**

## MINING



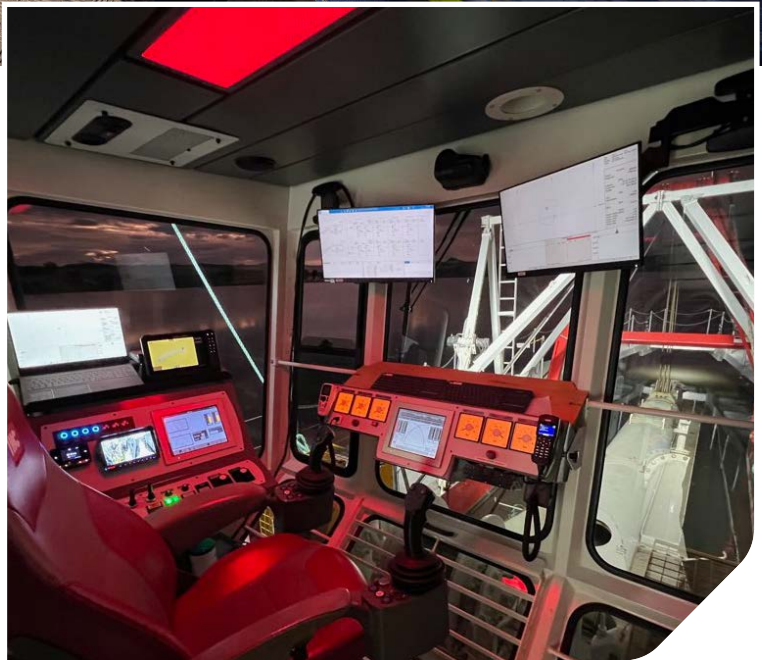
### TAILINGS DREDGING & RELOCATION

- Hydraulic relocation of tailings from dams and pits
- Multi-dredge operations for high-volume projects
- Tailings transfer to alternate containment or processing areas



### ASH & SLURRY MANAGEMENT

- Cutter suction dredging in live ash ponds
- Discharge pipe network design and delivery
- Compliance with EPA trial and fixed-period approvals



### MINE REHABILITATION SUPPORT

- Void filling, shaping and recontouring via hydraulic placement
- Removal of legacy tailings or materials for site closure
- Final-stage water infrastructure management



# MARINE



## RECLAMATION & WATERWAY MANAGEMENT

- Beach nourishment and coastal replenishment
- Maintenance dredging of navigation channels, berths, ports, and harbours
- Capital dredging for new marine infrastructure and waterway access



## ENVIRONMENTAL DREDGING

- Low-impact dredging in ecologically sensitive areas
- Silt and sediment removal to restore flow or improve quality
- Monitoring and compliance reporting support



## MAINTENANCE - PORT, CHANNEL & MARINE ASSET MAINTENANCE

- Regular maintenance dredging under long-term contracts
- Removal of sediment to ensure navigability
- Rapid response for weather or tidal-driven infill events



## LAND RECLAMATION PROJECTS

- Support for major reclamation initiatives such as airport or industrial precinct expansions
- Slurry delivery and placement management



# ENGINEERING CAPABILITY



Every successful dredging project begins with the right design. Birdon's in-house engineering team brings deep technical expertise in dredge configuration, pipeline hydraulics, site-specific equipment customisation, and environmental compliance.



**Custom dredge system design** and modification



**Discharge pipeline** and booster design



**Performance modelling** and optimisation



**Integrated project planning** with mine engineers



**Maintenance protocols** and remote diagnostics

We build and maintain much of our own equipment - so we know how to adapt fast, fix quickly, and keep operations running no matter the conditions.

## MEET THE PEOPLE WHO MAKE IT HAPPEN

Birdon's people are the backbone of our capability. From field operators to engineers, from project managers to HSEQ specialists, our people operate with a shared mindset: make it happen.

### Our teams are:



Regionally based and **ready to deploy**



**Experienced** across mining, environmental, and marine projects



**Supported** by safety, compliance, and logistics professionals

Our leadership team and frontline staff bring decades of experience, but it's our collaborative spirit, problem-solving mindset, and operational accountability that make Birdon a partner of choice.



# ESG & SAFETY

At Birdon, we believe the future of both maritime and mining industry depends on how responsibly we manage the past and shape what comes next. Our approach to environmental, social, and governance (ESG) performance is embedded across every dredging project we deliver, from mine pit tailings relocation to coastal maintenance and port access dredging.

Our operations are governed by Birdon's Integrated Management System, certified to:

- ISO 9001:2015  
– Quality Management
- ISO 45001:2018  
– Safety Management
- ISO 14001:2015  
– Environmental Management



**Birdon implements tailored Environmental Management Plans for all major projects**, addressing site-specific risks like noise, water quality, sediment, and biodiversity, with additional marine and mining measures to protect sensitive environments.



**As a trusted regional employer, Birdon has safely delivered dredging projects with zero Lost Time Injuries** over extended periods, supported by strong induction, training, and risk management systems.



**Birdon's Indigenous Engagement Strategy drives employment, supplier partnerships, and cultural awareness**, ensuring our projects deliver lasting value through respectful relationships and economic inclusion.



# OUR FLEET



**Birdon operates a modern, high-performance fleet designed for regional and remote delivery.**

**Our assets include:**

- Cutter suction dredges
- Backhoe dredges
- Split hopper barges
- Workboats and support vessels
- Civil plant
- Dumb barges
- Booster pumps
- A comprehensive range of pipeline and ancillary equipment

All dredges supported by Birdon-designed discharge lines, booster pumps, and maintenance protocols. The fleet is maintained in-house and engineered for scalability, reliability, and rapid deployment.



# Birdon<sup>®</sup>

## We DESIGN BUILD MAINTAIN DECOMMISSION

*Birdon successfully delivered the maintenance dredging of AGL Loy Yang's ash pond, removing 1.4 million m<sup>3</sup> of ash slurry in 11 months using a cutter suction dredge and 1km of 350mm pipeline. Operating in live ponds under strict EPA Victoria conditions, Birdon maintained 24-hour shiftwork with minimal downtime. Despite complex site access and operational challenges, they worked collaboratively, safely, and independently—demonstrating strong systems and a pragmatic approach to integrating with site operations.*

*- Steven Cluning  
Civil Superintendent, AGL Loy Yang Mine*

*Birdon is our go-to source for dredging expertise. Their professional team consistently provides high-quality service and innovative solutions for complex tasks we can't handle ourselves. They excel in delivering technical information and finding creative solutions for unique challenges. Highly recommended.*

*- Simon Marangio  
Port Services Officer, Parks Victoria*

*Birdon has been a stand out partner in relation to their experience in dredging operations. There are some key individuals in Birdon that have been part of dredging for the majority of their career and their experience and guidance into how the dredging operations proceed here at Birdon is instrumental to the success of this project.*

*- Andrew Green  
Tailings Production Superintendent  
at Glencore's Bulga Open Cut*

## BIRDON DREDGING

**Brenton Abbott**  
MANAGER - DREDGING  
Mobile +61 418 657 400  
Email [brenton@birdon.com.au](mailto:brenton@birdon.com.au)

**Justin Sayer**  
PROJECT MANAGER - DREDGING  
Mobile +61 433 222 650  
Email [justins@birdon.com.au](mailto:justins@birdon.com.au)



**AUSTRALIA | USA | UK | EUROPE | ASIA**

**[birdongroup.com](http://birdongroup.com)**